



# EMI/EMC POWER LINE FILTERS

## EBK1.EBK3 Series

### \*Features

Excellent performance for both common mode and differential mode interference at low frequency area

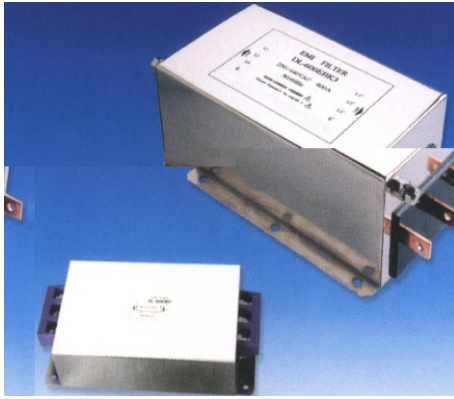
Large current capacitance

### \*Application

Suited high performance, heavy interference environments such as inverter speed controlled systems

### \*Technical Data

Rated Voltage	250/440VAC
Operating Frequency	50/60Hz
Rated Current	100A-600A
Test Voltage(1min)	1500VDC(line/line)
Test Voltage(1min)	2250VDC(line/ground)
Climatic Category	40/085/21



Model DL-	Terminal		Rated Current (A)	Ground Capacitance (nF)	Discharge Resistance (KΩ)	Circuit Diagram FIG.	Dimension FIG.
	Input	Output					
100EBK1			100	100	220	1	1
150EBK1			150	100	220	1	1
200EBK1			200	100	220	1	1
300EBK3			300	2.1 uF	660	2	2
400EBK3			400	2.1 uF	660	2	2
600EBK3			600	2.1 uF	660	2	2

### \*Typical Circuit Diagram

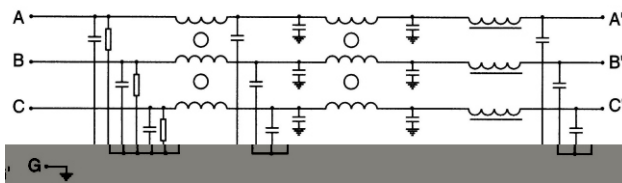


Fig1

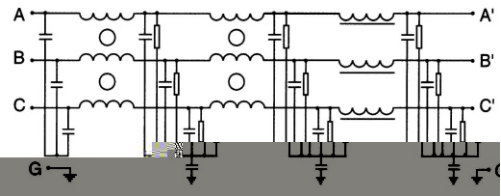


Fig2

### \*Outline Drawing and Dimensions:(mm)

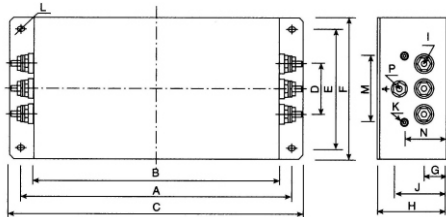


Fig1

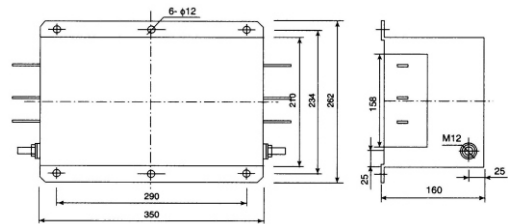


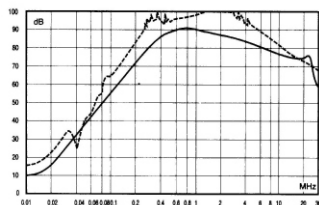
Fig2

Model	A	B	C	D	E	F	G	H	I	J	K	M	N	P	L
DL-100EBK1	354	320	384	66	155	185	30	90	M8	62	M4	86	56	M8	6.4 × 9.4
DL-150EBK1	354	320	384	66	190	220	35	100	M8	62	M4	86	61	M8	6.4 × 9.4

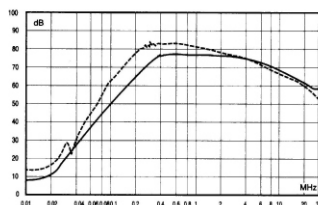
### \*Insertion Loss in dB(Measured in 50 ohm system as IEC/CISPER NO.7)

—( Common Mode ) -----(Differential Mode)

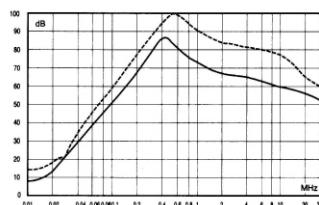
100EBK1



150EBK1



200EBK1



300EBK3 / 400EBK3 / 600EBK3

