

## EBT1 Series

### \*Features

Excellent performance for both common mode and differential mode interference at low frequency area.

### \*Application

Low Leakage current

### \*Technical Data

Rated Voltage	250/440VAC
Operating Frequency	50/60Hz
Rated Current	5A-80A
Test Voltage(1min)	1500VDC(line/line)
Test Voltage(1min)	2250VDC(line/ground)
Climatic Category	40/085/21

Model DL-	Terminal		Rated Current (A)	Ground Capacitance (nF)	Discharge Resistance (MΩ)	Circuit Diagram FIG.	Dimension FIG.
	Input	Output					
5EBT1			5	47	220	1	1
10EBT1			10	47	220	1	1
20EBT1			20	47	220	1	1
25EBT1			25	47	220	1	1
35EBT1			35	47	220	1	1
50EBT1			50	100	220	1	1
65EBT1			65	100	220	1	1
80EBT1			80	100	220	1	1

### \*Typical Circuit Diagram

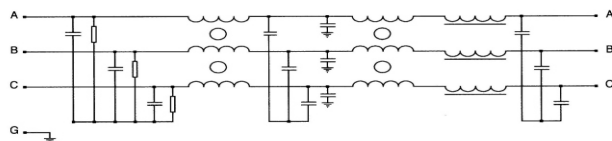


Fig1

### \*Outline Drawing and Dimensions:(mm)

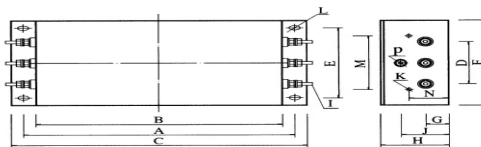


Fig1

Model	A	B	C	D	E	F	G	H	I	J	K	M	N	P	L
DL-5EBT1	184	160	202	42	60	86	18	58	M4	38	-	-	-	M4	6.4 × 9.4
DL-10EBT1															
DL-20EBT1															
DL-25EBT1															
DL-35EBT1	243	220	261	58	70	100	25	90	M6	58	M4	7.4	4.9	M6	6.4 × 9.4
DL-50EBT1															
DL-65EBT1															
DL-80EBT1	354	320	384	66	155	185	30	90	M8	62	M4	8.6	5.6	M8	6.4 × 9.4

### \*Insertion Loss in dB(Measured in 50 ohm system as IEC/CISPR NO.17)

—(Common Mode) -----(Differential Mode)

