



# EMI/EMC POWER LINE FILTERS

## EB .EBX Series

### \*Features

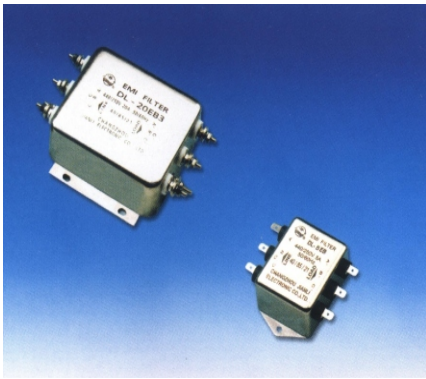
General purpose  
Feature compact, easy to install.

### \*Application

Suppress the industrial radio interference along power lines

### \*Technical Data

Rated Voltage **250/440VAC**  
 Operating Frequency **50/60Hz**  
 Rated Current **5A-50A**  
 Test Voltage(1min) **1500VDC(line/line)**  
 Test Voltage(1min) **2250VDC(line/ground)**  
 Climatic Category **25/085/21**



Model DL-	Terminal		Rated Current (A)	Ground Capacitance (nF)	Discharge Resistance (MΩ)		Circuit Diagram FIG.	Dimension FIG.
	Input	Output			R 1-3	R o		
5EB			5	6.8			1	1
10EB			10	6.8			1	1
5EBX1			5	6.8			1	2
10EBX1			10	6.8			1	2
15EB3			15	6.8			2	3
20EB3			20	6.8			2	3
25EB3			25	6.8			2	3
30EB3			30	6.8			2	3
40EB3			40	6.8			2	4
50EB3			50	6.8			2	4

### \*Typical Circuit Diagram

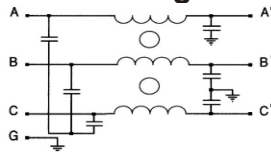


Fig1

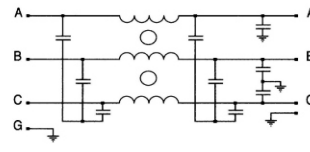


Fig2

### \*Outline Drawing and Dimensions:(mm)

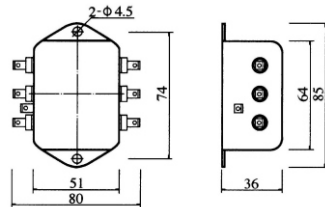


Fig1

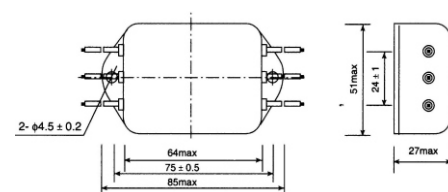


Fig2

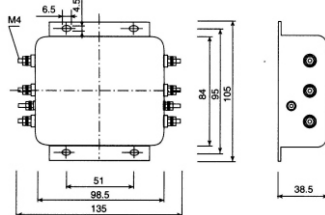


Fig3

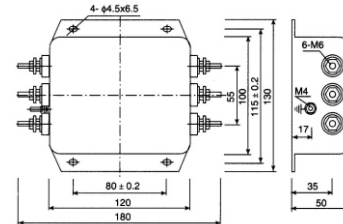


Fig4

### \*Insertion Loss in dB(Measured in 50 ohm system as IEC/CISPER NO.17) ——( Common Mode ) -----(Differential Mode)

