



EMI/EMC POWER LINE FILTERS

EAK1 , EAK3 Series

*Features

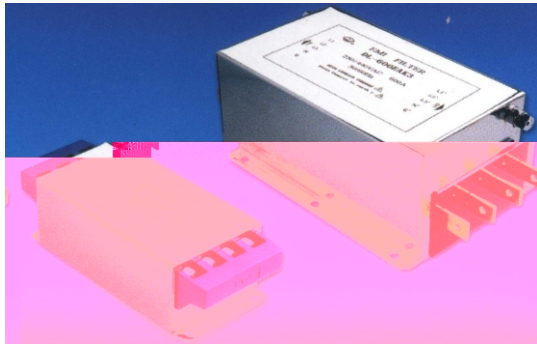
High attenuation to low frequency, excellent Performance Of common mode and differential mode interference suppression

*Application

Large current

*Technical Data

Rated Voltage **250/440VAC**
 Operating Frequency **50/60Hz**
 Rated Current **50A-600A**
 Test Voltage **1500VDC(line/line)**
 Test Voltage **2250VAC(line/ground)**
 Climatic Category **40/085/21**



MODEL DL-	TERMINAL		RATED CURRENT (A)	GROUND CAPACITANCE (NF)	DISCHARGE RESISTANCE (K Ω)		DIMENSION FIG.
	INPUT	OUTPUT					
50EAK1	≡	≡	50	94	440		1
80EAK1	≡	≡	80	200	440		1
100EAK1	≡	≡	100	200			1
150EAK1	≡	≡	150	200			1
300EAK3			300	2.4 uF	660/330	2	2
400EAK3			400	2.4 uF	660/330	2	2
600EAK3			600	2.4 uF	660/330	2	2

*Typical Circuit Diagram

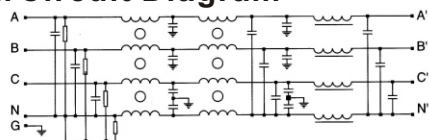


FIG1

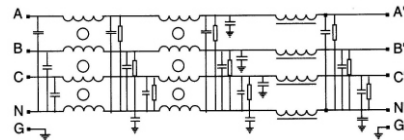


FIG2

*Outline Drawing and Dimensions:(mm)

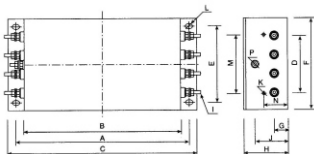


FIG1

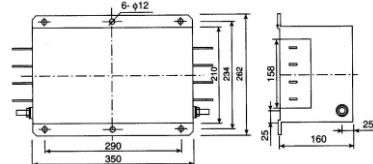


FIG2

MODEL	A	B	C	D	E	F	G	H	I	J	K	M	N	P	L
DL-50EAK1	243	220	261	81	96	125	25	90	M6	58	M4	74	49	M6	6.4x9.4
DL-80EAK1	354	320	384	99	155	185	30	90	M6	62	M4	86	56	M8	6.4x9.4
DL-100EAK1															
DL-150EAK1	354	320	384	99	190	220	35	100	M6	62	M4	86	61	M8	6.4x9.4

*Insertion Loss in dB(Measured in 50 ohm system as IEC/CISPER NO.17)

—— (Common Mode) -----(Differential Mode)

