

EA. EAX Series

*Features

Compact unit, general purpose
Effective for both balanced and unbalanced
three phase loads

*Application

Suppress the industrial radio interference along
power lines

*Technical Data

Rated Voltage	250/440VAC
Operating Frequency	50/60Hz
Rated Current	5A-150A
Test Voltage(1min)	1500VDC(line/line)
Test Voltage(1min)	2250VDC(line/ground)
Climatic Category	25/085/21

Model DL-	Terminal		Rated Current (A)	Ground Capacitance (nF)	Discharge Resistance (MΩ)	Circuit Diagram FIG.	Dimension FIG.
	Input	Output					
5EA			5	6.8		1	1
10EA			10	6.8		1	1
5EAX1			5	6.8		1	2
10EAX1			10	6.8		1	2
15EA3			15	6.8		2	5
20 EA3			20	6.8		2	5
25EA3			25	6.8		2	5
30EA3			30	6.8		2	5
40EA3			40	10	2	2	6
50EA3			50	10	2	2	6
80EA3			80	10	2	2	3
100EA1			100	13.6	0.44	2	4
150EA1			150	200	0.44	2	3

*Typical Circuit Diagram

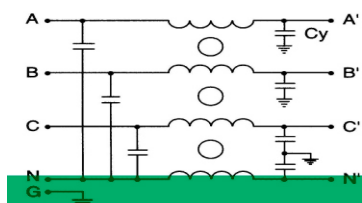


Fig1

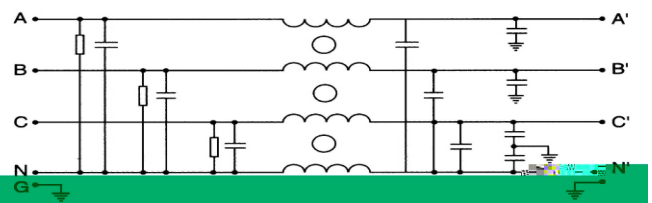


Fig2

*Outline Drawing and Dimensions:(mm)

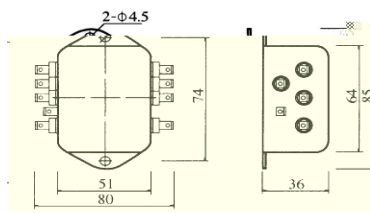


Fig1

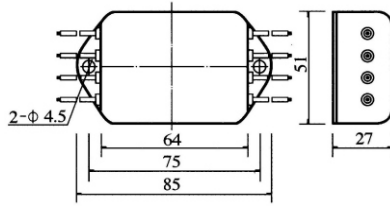


Fig2

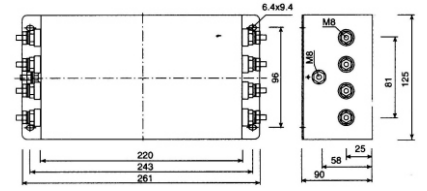


Fig3

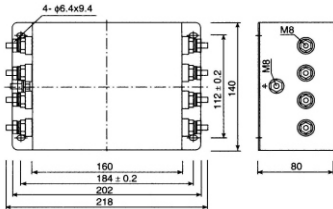


Fig4

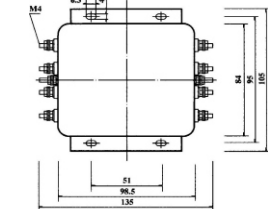


Fig5

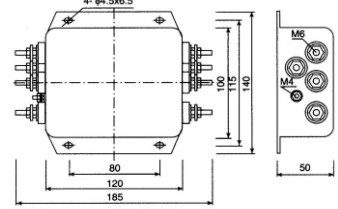


Fig6

*Insertion Loss in dB(Measured in 50 ohm system as IEC/CISPR NO.17) ——(Common Mode) -----(Differential Mode)

