



EMI/EMC POWER LINE FILTERS

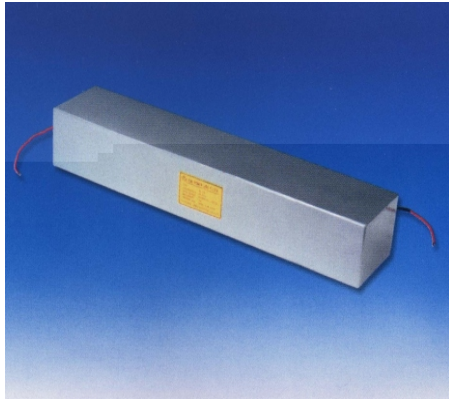
C Series

The C Series filters are designed for shielded rooms, and suited for environments where power strict to be purified. The filter offering low turning frequency wide suppressing area and strong suppressing capacity.

2x:double lines;
M:leakage current;
N:leakage current.

*Technical Data

Rated Voltage	220/380VAC 500VDC
Operating Frequency	50/60Hz
Test Voltage	1000VDC(line/line)
Test Voltage	1000VDC(line/ground)
Leakage Current	220VAC/50Hz
Climatic Category	25/070/21



Model D L -	Rated Current (A)	Leakage Current ≤ mA	Insertion Loss (Measured in 50 Ω)		Dimension FIG.
			Frequency (Hz)	IL (dB)	
15 C	15	6.6	14 K ~ 10 G	100	1
25 C	25	6.6	14 K ~ 10 G	100	1
50 C	50	9.7	14 K ~ 10 G	100	1
50 C N 1	50	5.3	14 K ~ 10 G	100	1
50 C N -400	50	0.58	100 K ~ 18 G	100	1
70 C N	70	6.9	14 K ~ 10 G	100	2
100 C N	100	7	10 K ~ 10 G	60 ~ 100	2
200 C N	200	20	14 K ~ 10 G	100	2
2 × 1 C	1	0.33	14 K ~ 10 G	100	1
2 × 6 C	6	0.9	14 K ~ 10 G	100	1
2 × 15 C N	15	1.3	14 K ~ 10 G	100	1
2 × 20 C	20	6.6	14 K ~ 10 G	100	1
2 × 30 C	30	6.6	14 K ~ 10 G	100	1
2 × 30 C M	30	2.7	14 K ~ 10 G	100	1
2 × 30 C N	30	1.9	14 K ~ 10 G	100	1

*Outline Drawing and Dimensions:(mm)

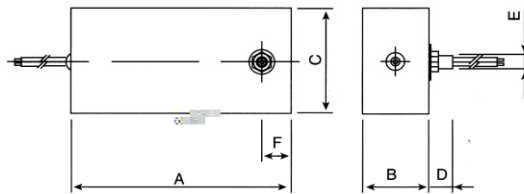


Fig1

Model	A	B	C	D	E	F
D L -15 C	760	135	110	48	M 16	30
D L -25 C						
D L -50 C						
D L -50 C N 1	760	130	100	46	M 24	30
D L -50 C N -400	690	140	110	48	M 16	30
D L -2 X 1 C	300	100	150	46	M 16	20
D L -2 X 6 C	310	100	160	46	M 16	15
D L -2 X 15 C N	760	120	200	46	M 16	30
D L -2 X 20 C	760	120	200	46	M 24	30
D L -2 X 30 C						
D L -2 X 30 C M						
D L -2 X 30 C N						

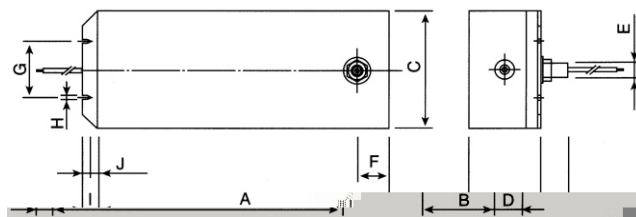


Fig2

Model	A	B	C	D	E	F	G	H	I	J
D L -70 C N	890	140	170	46	M 24	30	90	8.2	30	16
D L -100 C N										
D L -200 C N										