



# EMI/EMC POWER LINE FILTERS

## TH Series

### \*Features

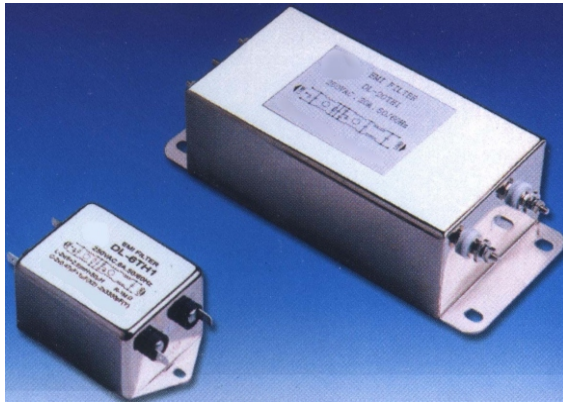
High performance filters differential mode choke Low leakage current

### \*Application

TH Series are available for digital systems (partially for switching power supplies) to suppress the continuity or intermittent pulse interference. TH Series are well suited for low impedance loads environments exist.

### \*Technical Data

Rated Voltage **120/250VAC**  
 Operating Frequency **50/60Hz**  
 Rated Current **6A-30A**  
 Test Voltage **1500VDC(line/line)**  
 Test Voltage **1500VAC(line/ground)**  
 Climatic Category **25/085/21**



Model DL-	Terminal		Rated Current (A)	Ground Capacitance (nF)	Leakage Current ≤mA	Discharge Resistance R(MΩ)	Circuit Diagram FIG.	Dimension FIG.
	Input	Output						
6TH1			6	3.3	0.5	1	1	1
10TH1			10	3.3	0.5	1	1	2
15TH1			15	3.3	0.5	1	2	3
20TH1			20	3.3	0.5	1	2	3
30TH1			30	3.3	0.5	1	2	3

### \*Typical Circuit Diagram

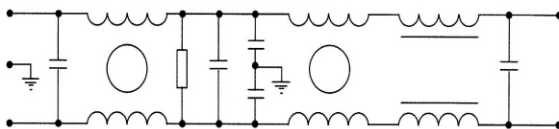


Fig1

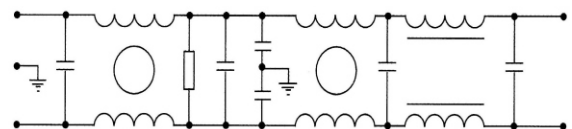
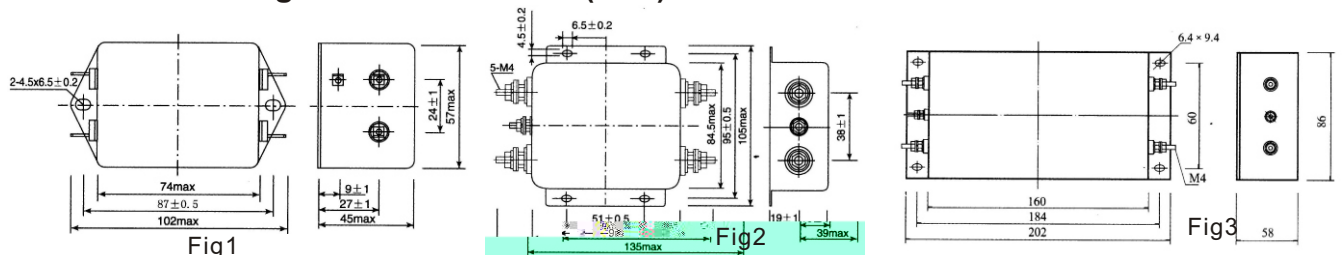


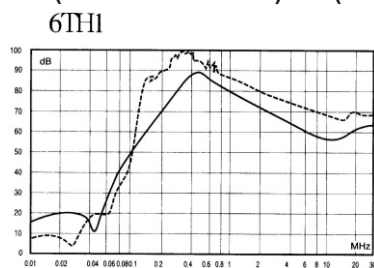
Fig2

### \*Outline Drawing and Dimensions:(mm)

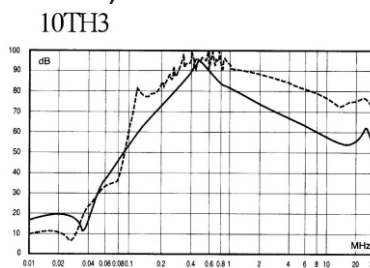
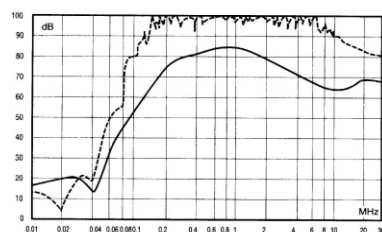


### \*Insertion Loss in dB(Measured in 50 ohm system as IEC/CISPER NO.17)

— ( Common Mode ) -----(Differential Mode)



20TH1



30TH1

