

## T Series

### \*Features

High performance filters  
Low leakage current

### \*Application

T Series are available for digital systems (particularly for switching power supplies) to suppress the continuity or intermittent pulse interference. T Series are well suited for low impedance loads environments exist.

### \*Technical Data

Rated Voltage           120/250VAC  
Operating Frequency   50/60Hz  
Rated Current           2A-50A  
Test Voltage            1500VDC (line/line)  
Test Voltage            1500VAC (line/ground)  
Climatic Category      25/085/21

Model DL-	Terminal		Rated Current (A)	Ground Capacitance (nF)	Leakage Current ≤mA	Discharge Resistance (MΩ)	Circuit Diagram FIG.	Dimension FIG.
	Input	Output						
2T1	⏏	⏏	2	2.2	0.5	1	1	1
3T1	⏏	⏏	3	3.3	0.5	1.5	1	2
3T3	⏏	⏏	3	3.3	0.5		3	9
6T1	⏏	⏏	6	3.3	0.5	1.5	2	2
6T12	⏏	⏏	6	3.3	0.5	1	2	3
8T1	⏏	⏏	8	4.7	0.5	1	2	4
10T1	⏏	⏏	10	3.3	0.5	1.5	2	2
10T11	⏏	⏏	10	3.3	0.5	1	2	3
10T12	⏏	⏏	10	4.7	0.5	1	2	4
12T1	⏏	⏏	12	4.7	0.5	1	2	4
15T1	⏏	⏏	15	3.3	0.5	1.5	2	5
20T1	⏏	⏏	20	4.7	0.5	1.5	2	6
20T3	⏏	⏏	20	3.3	0.5	1.5	4	7
50T3	⏏	⏏	50	6.8	1.0	1.5	2	8

### \*Typical Circuit Diagram

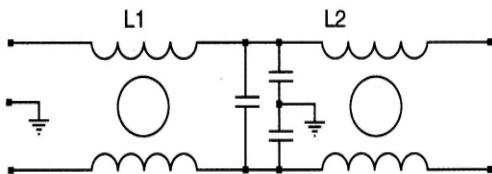


Fig1

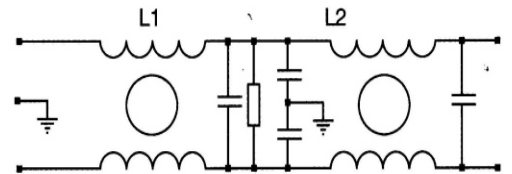


Fig2

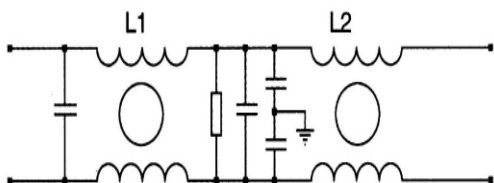


Fig3

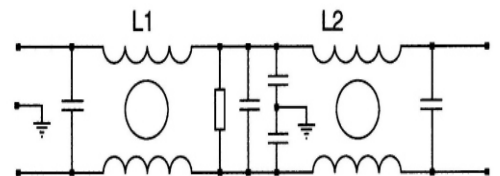
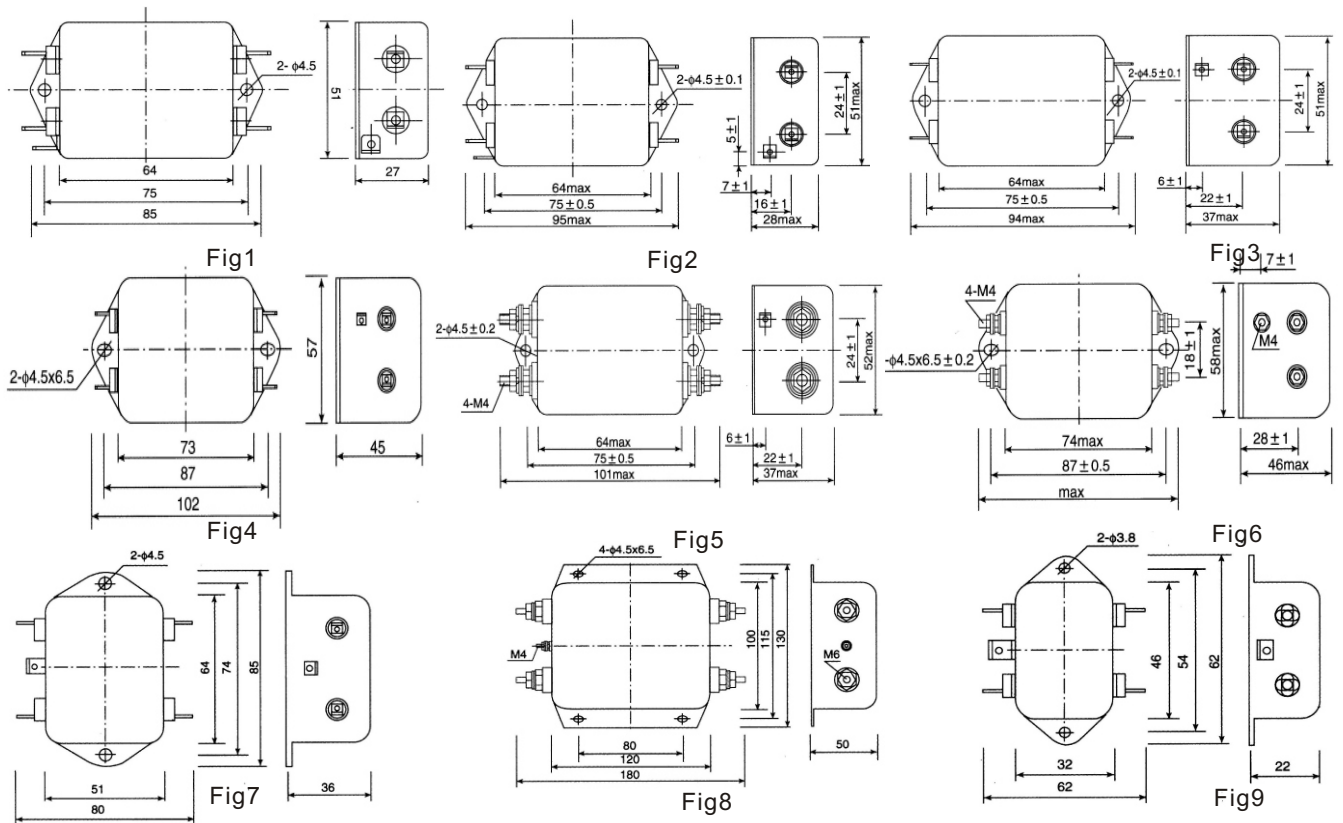


Fig4

## \*Outline Drawing and Dimensions:(mm)



## \*Insertion Loss in dB(Measured in 50 ohm system as IEC/CISPER NO.17)

——( Common Mode )-----(Differential Mode)

