

DH Series

*Features

With differential mode choke
High ratio of performance to cost make

*Application

Switching power supplies & converters

*Technical Data

Rated Voltage	250VAC
Operating Frequency	50/60Hz
Rated Current	1A-20A
Test Voltage	1500VDC(line/line)
Test Voltage	1500VAC(line/ground)
Climatic Category	25/085/21

Model DL-	Terminal		Rated Current (A)	Ground Capacitance (nF)	Leakage Current ≤ mA	Discharge Resistance (M Ω)	Circuit Diagram FIG.	Dimension FIG.
	Input	Output						
1DH1			1	4.7	0.5	0.44	1	1
3DH1			3	4.7	0.5	0.44	1	2
16DH1			16	4.7	0.5	1	2	3
16DH11			16	10	1.0	1	2	4
20DH1			20	4.7	0.5	1	1	5

*Typical Circuit Diagram

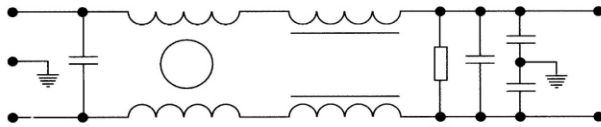


Fig1

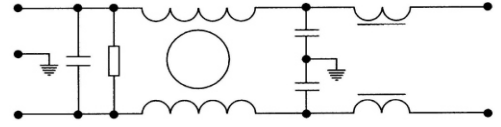


Fig2

*Outline Drawing and Dimensions:(mm)

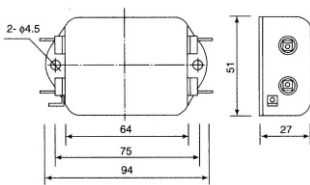


Fig1

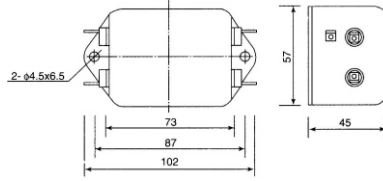


Fig2

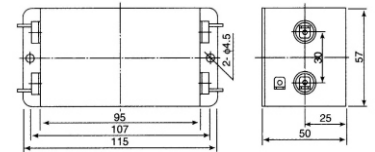


Fig3

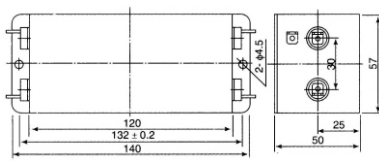


Fig4

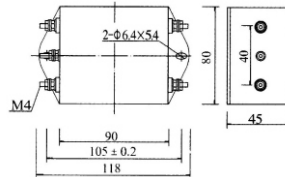
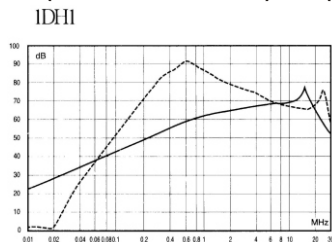


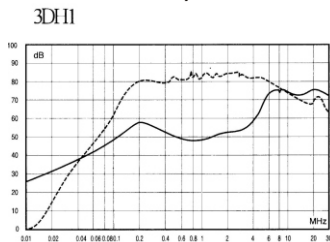
Fig5

*Insertion Loss in dB(Measured in 50 ohm system as IEC/CISPER NO.17)

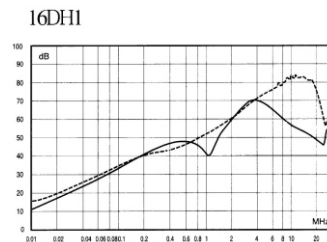
— (Common Mode) ---- (Differential Mode)



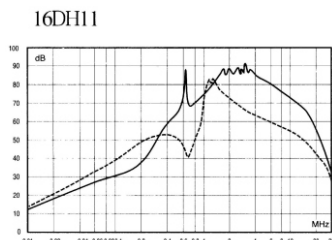
1DH1



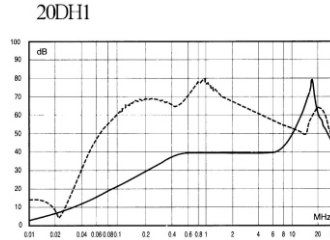
3DH1



16DH1



16DH11



20DH1