

D.DT.DX Series

*Features

General purpose

Easy to install

*Application

Available forelectronic equipments
and measuring instruments

*Technical Data

Rated Voltage	250VAC
Operating Frequency	50/60Hz
Rated Current	1A-200A
Test Voltage	1500VDC(line/line)
Test Voltage	1500VAC(line/ground)
Climatic Category	25/085/21

Model DL-	Terminal		Rated Current (A)	Ground Capacitance (nF)	Leakage Current ≤ mA	Discharge Resistance (MΩ)	Circuit Diagram FIG.	Dimension FIG.
	Input	Output						
1D31			1	2.2	0.5		1	1
2D1			2	3.3	0.5		1	2
2D3			2	3.3	0.5		1	1
3D1			3	3.3	0.5		1	2
3D3			3	3.3	0.5		1	3
6D11			6	3.3	0.5		1	2
6D3			6	3.3	0.5		1	3
6D12			6	1.0	0.5	0.68	1	11
10D36			10	2.2	0.5		1	3
15D11			15	3.3	0.5	1	2	5
20D11			20	4.7	0.5	0.44	2	5
30D11			30	4.7	0.5	1.5	1	5
1D3			1	4.7	0.5		2	3
2D13			2	3.3	0.5		2	2
6D1			6	3.3	0.5		2	10
10D			10	3.3	0.5	1.5	2	10
15D1			15	3.3	0.5	1.5	2	10
15D3			15	3.3	0.5	1.5	2	6
20D32			20	3.3	0.5	1.5	2	4
20D3			20	3.3	0.5	1.5	2	6
25D1			25	3.3	0.5	1.5	2	5
30D1			30	3.3	0.5	1.5	2	5
30D3			30	3.3	0.5	1.5	2	7
35D3			35	4.7	0.5	1.5	2	7
50D3			50	4.7	0.5	1.5	2	7
60D3			60	4.7	0.5	1.5	2	7
100D3			100	6.8	1.0	1.5	2	8
100D31			100	6.8	1.0	1.5	2	12
120D3			120	6.8	1.0	1.5	2	8
150D1			150	6.8	1.0	1	2	9
200D1			200	6.8	1.0	1	2	9
1DX13			1	2.2	0.5		1	13
1DX31			1	4.7	0.5		2	14
1DX32			1	4.7	0.5		2	14
1DX33			1	2.2	0.5		1	14
2DX31			2	2.2	0.5		1	14
3DX31			3	2.2	0.5		1	14
6DX1			6	2.2	0.5		1	15
10DX1			10	2.2	0.5		1	15
20DX1			20	3.3	0.5	1.5	2	16
20DX11			20	3.3	0.5	1.5	1	17
3DT			3	3.3	0.5	1.5	4	18
6DT			6	3.3	0.5	1.5	4	18
8DT			8	6.8	1.0	0.15	4	19
10DT			10	3.3	0.5	1.5	3	20
16DT01			16	20	2.0	0.68	3	21

*Typical Circuit Diagram

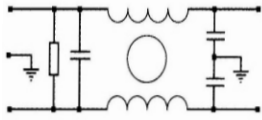


Fig1

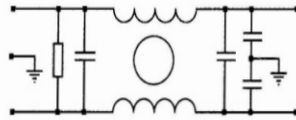


Fig2

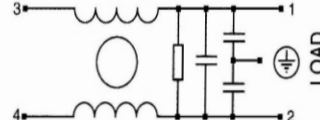


Fig3

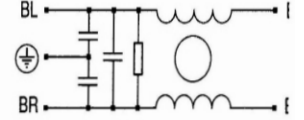


Fig4

*Outline Drawing and Dimensions:(mm)

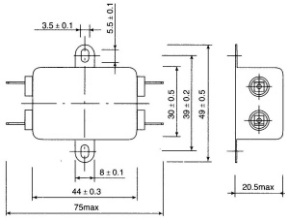


Fig1

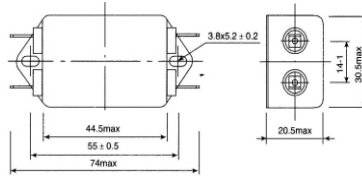


Fig2

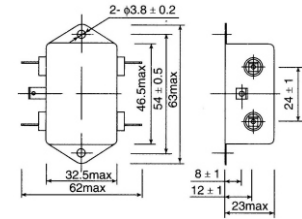


Fig3

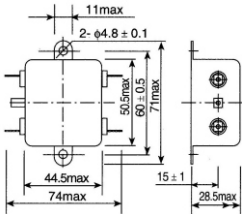


Fig4

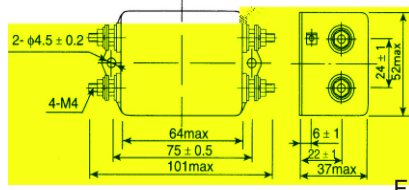


Fig5

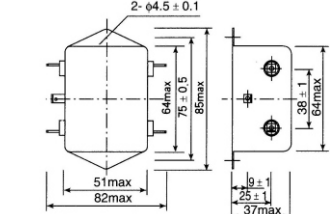


Fig6

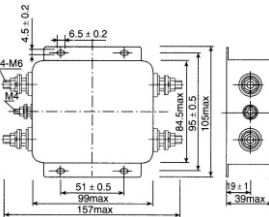


Fig7

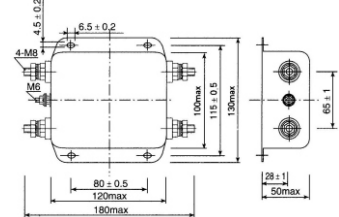


Fig8

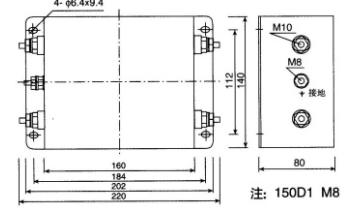


Fig9

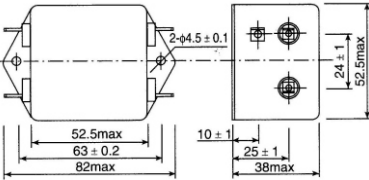


Fig10

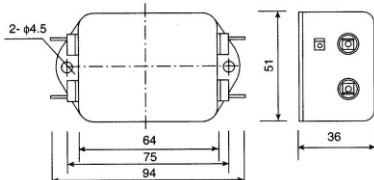


Fig11

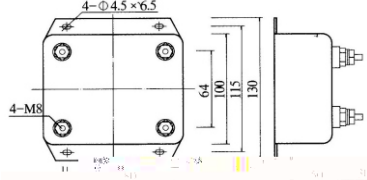


Fig12

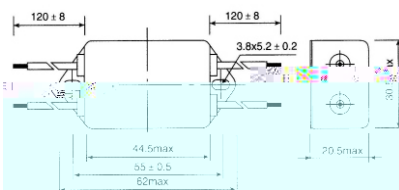


Fig13

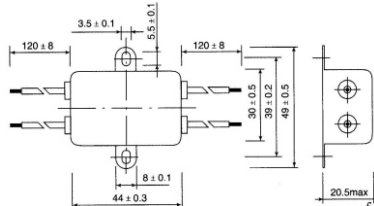


Fig14

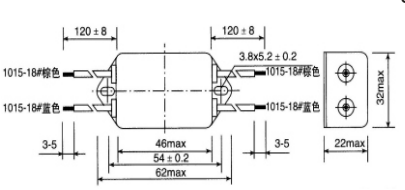


Fig15

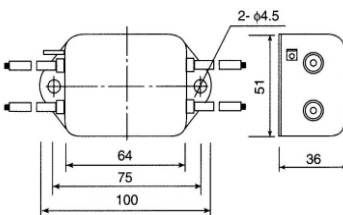


Fig16

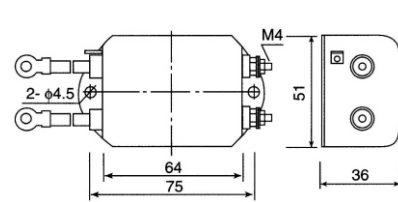


Fig17

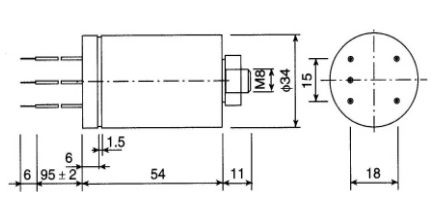


Fig18

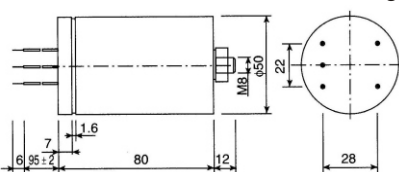


Fig19

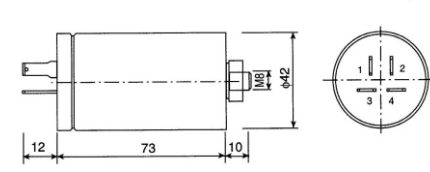


Fig20

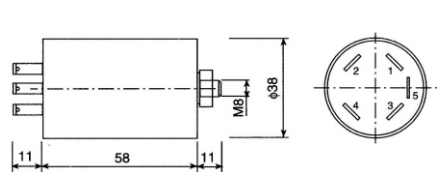


Fig21

***Insertion Loss in dB (Measured in 50 ohm system as IEC/CISPR NO. 17)**
 — (Common Mode) - - - (Differential Mode)

