

DZ2R, DZ2KR Series

*Features

General purpose fused (fused & switched) IEC connector Filters (R : fused k : switch).
Space-saving design

*Application

Available for mini-electronic equipments and measuring instruments

*Technical Data

Rated Voltage **250VAC**
Operating Frequency **50/60Hz**
Rated Current **1A-10A**
Test Voltage **1768VDC(line/line)**
Test Voltage **1500VAC(line/ground)**
Climatic Category **25/085/21**

Model D L -	Terminal		Rated Current (A)	Ground Capacitance (nF)	Leakage Current ≤ mA	Discharge Resistance (MΩ)	Circuit Diagram FIG.	Dimension FIG.
	Input	Output						
1 D Z 2 R			1	2.2	0.5	1	1	1
3 D Z 2 R			3	2.2	0.5	1	1	1
6 D Z 2 R			6	2.2	0.5	1	1	1
10 D Z 2 R			10	2.2	0.5	1	1	1
1 D Z 2 K R			1	2.2	0.5	1	2	2
3 D Z 2 K R			3	2.2	0.5	1	2	2
6 D Z 2 K R			6	2.2	0.5	1	2	2
10 D Z 2 K R			10	2.2	0.5	1	2	2

*Typical Circuit Diagram

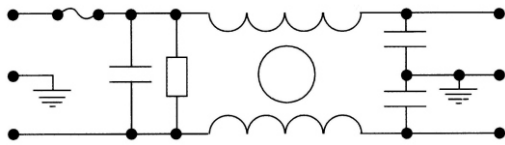


Fig1

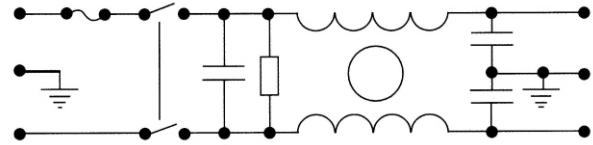


Fig2

*Outline Drawing and Dimensions:(mm)

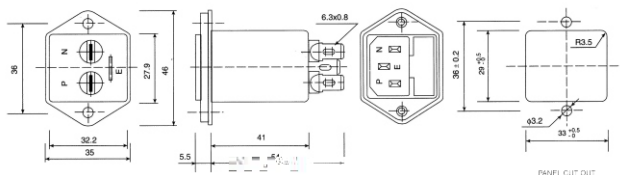


Fig1

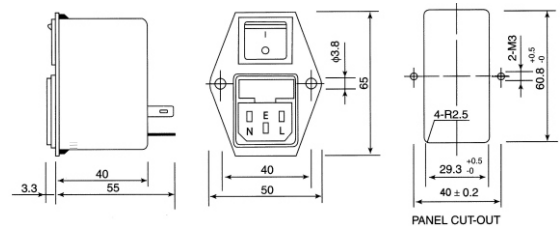


Fig2

*Insertion Loss in dB (Measured in 50 ohm system as IEC/CISPR NO.17)

— (Common Mode) ---- (Differential Mode)

