

DZ Series

*Features

General purpose filter with IEC connector
High ratio of performance to cost make

*Application

Available for mini-electronic equipments and measuring instruments

*Technical Data

Rated Voltage	250VAC
Operating Frequency	50/60Hz
Rated Current	1A-6A
Test Voltage	1500VDC(line/line)
Test Voltage	1500VAC(line/ground)
Climatic Category	25/085/21

MODEL	TERMINAL		RATED CURRNT (A)	GROUND CAPACITANCE (NF)	LEAKAGE CAPACITANCE ≤ (MA)	DISHCHANGE RESISTANCE (MΩ)	CIRCUIT DIAGRAM FIG.	DIMENSION FIG.
	INPUT	OUTPUT						
1DZ2			1	2.2	0.5		1	1
3DZ2			3	3.3	0.5		1	1
6DZ2			6	3.3	0.5		1	1
10DZ2			10	4.7	0.5		1	1
1DZX2			1	2.2	0.5	1	1	2
1DZX			1	2.2	0.5		1	2
3DZX			3	3.3	0.5		1	2
6DZX			6	3.3	0.5		1	2
3DZB21			3	4.7	0.5	1.5	2	3
6DZB21			6	4.7	0.5	1.5	2	3
10DZB21			10	3.3	0.5	1.5	2	4
15DZB2			15	3.3	0.5	1.5	2	5
16DZB2			16	10	0.5	0.225	1	6

*Typical Circuit Diagram

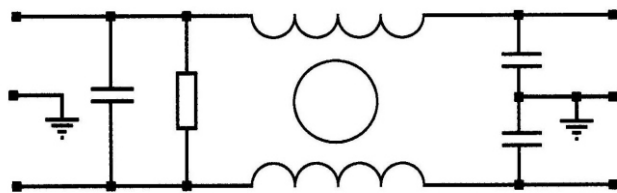


Fig1

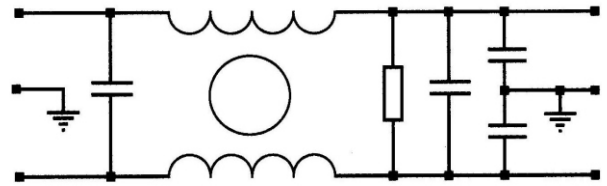


Fig2

*Outline Drawing and Dimensions:(mm)

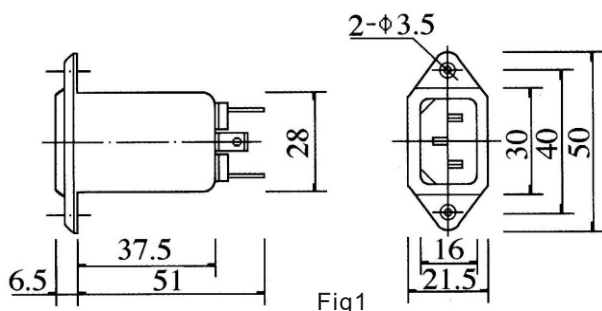


Fig1

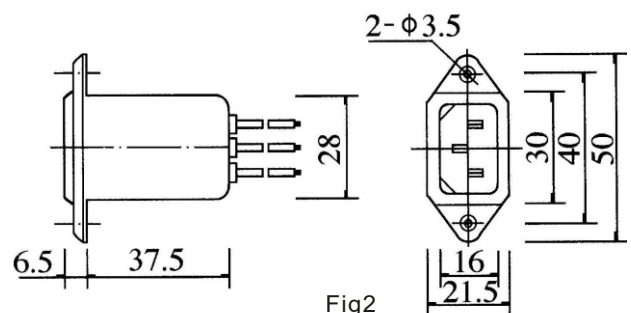


Fig2

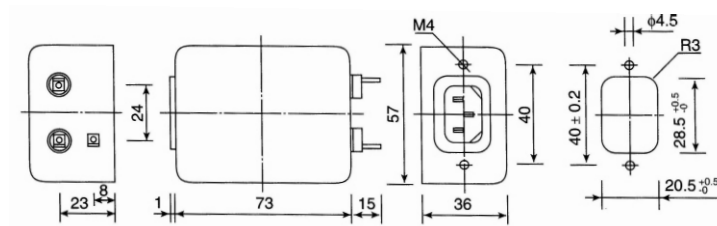


Fig3

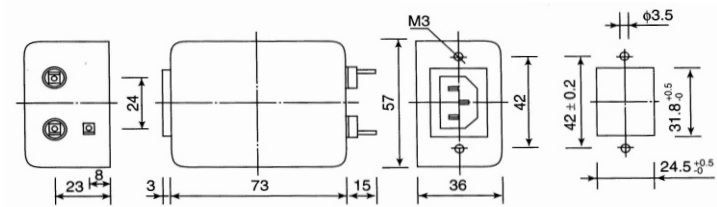


Fig4

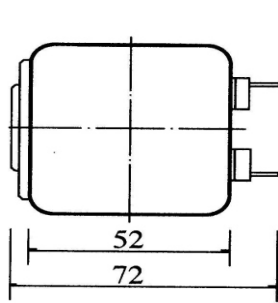


Fig5

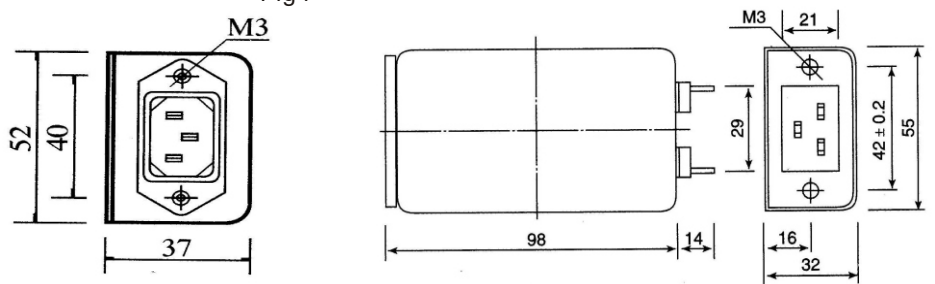
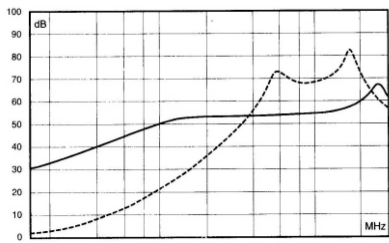


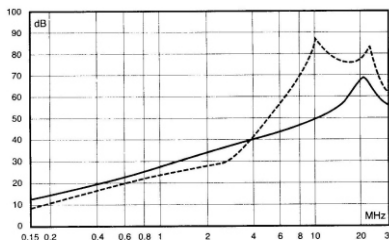
Fig6

***Insertion Loss in dB (Measured in 50 ohm system as IEC/CISPR NO. 7)**
 — (Common Mode) - - - (Differential Mode)

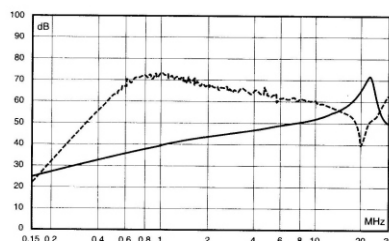
1DZ2 / 1DZX



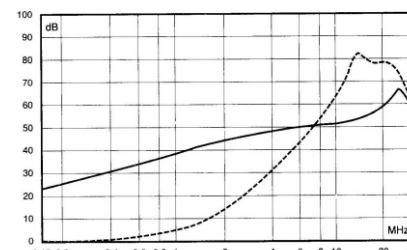
10DZ2



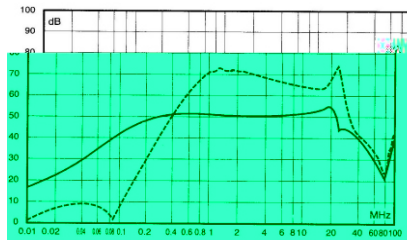
10DZB21



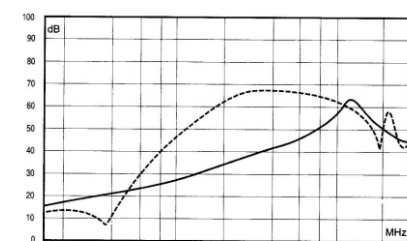
3DZ2 / 3DZX



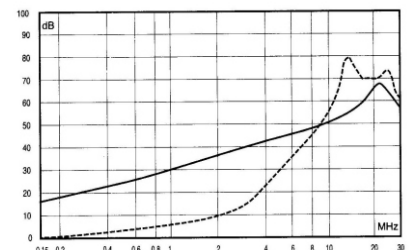
3DZB21



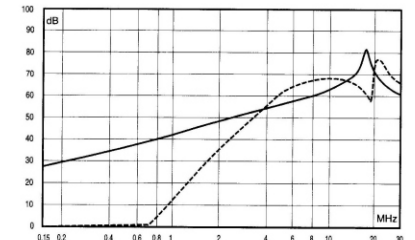
15DZB2



6DZ2 / 6DZX



6DZB21



16DZB2

