

F, FX Series

*Features

- General purpose
- Easy to install

*Application

- Available for electronic and measure instruments (DC side)

*Technical Data

Rated Voltage	80VAC
Rated Current	1A-260A
Test Voltage	350VDC(line/line)
Test Voltage	1414VDC(line/ground)
Climatic Category	25/085/21

Model DL-	Terminal		Rated Current (A)	Ground Capacitance (nF)	Leakage Current \leq mA	Discharge Resistance (M Ω)	Circuit Diagram FIG.	Dimension FIG.
	Input	Output						
1F3			1	22	-		1	1
1F31			1	4.7	-		1	1
3F3			3	22	-		1	2
3F31			3	4.7	-		1	2
6F1			6	22	-		1	3
10F1			10	22	-		1	3
15F1			15	22	-		1	3
20F1			20	22	-		1	3
25F1			25	22	-		1	4
30F1			30	22	-		1	4
35F1			35	22	-		1	4
40F1			40	22	-		1	4
40F3			40	22	-		1	5
50F3			50	22	-		1	5
60F31			60	22	-		1	5
80F3			80	44	-	1	2	6
80F33			80	44	-		2	8
100F3			100	44	-		2	6
120F3			120	44	-		2	6
140F3			140	44	-		2	6
180F1			180	44	-		2	7
200F1			200	44	-		2	7
260F1			260	44	-		2	7
260F11			260	44	-		2	7
1FX3			1	4.7	-		2	9
3FX1			3	22	-		2	10
20FX3			20	1u	-		2	11
40FX3			40	22	-		2	12

*Typical Circuit Diagram

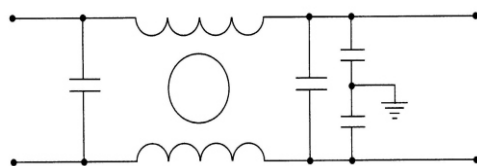


Fig1

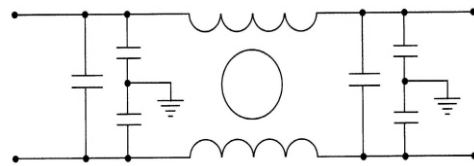
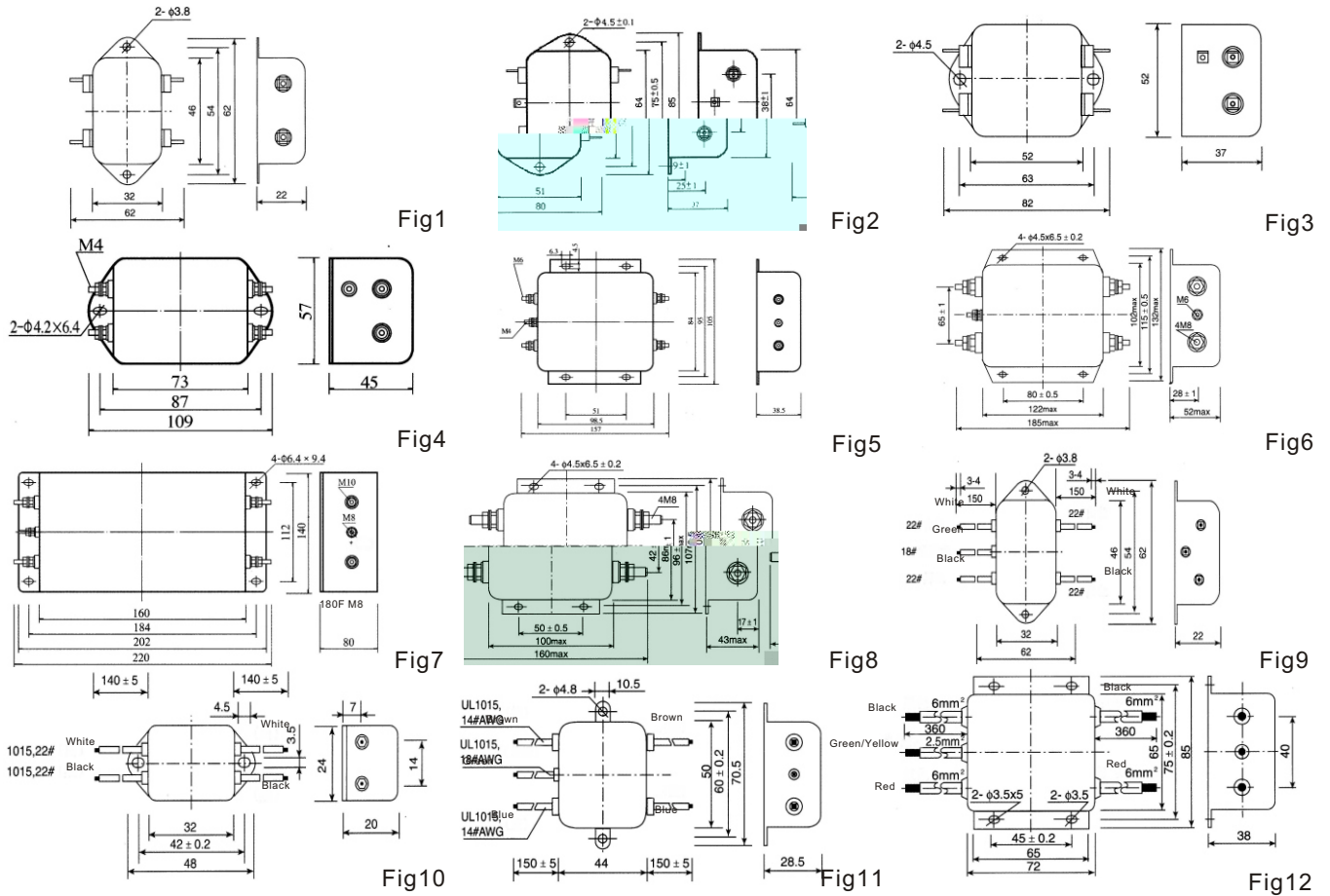


Fig2

*Outline Drawing and Dimensions:(mm)



*Insertion Loss in dB(Measured in 50 ohm system as IEC/CISPER NO.17) ——(Common Mode) -----(Differential Mode)

